



Running Codefresh Auto-scaling Pipelines on Amazon EKS

GUY SALTON

Guy Salton

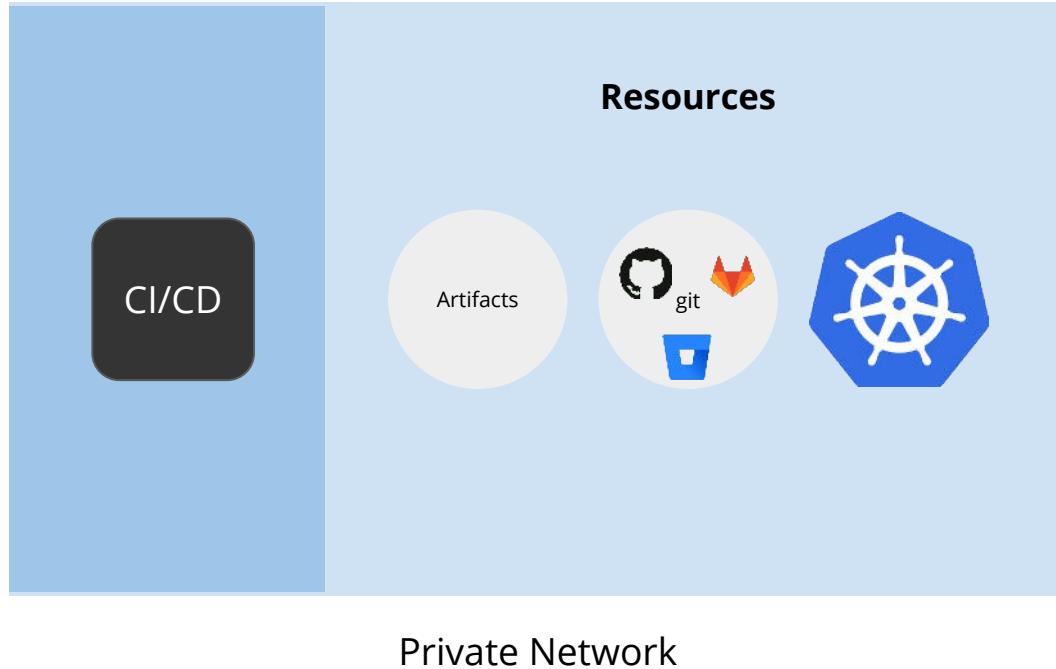
Solutions Architect



guy.salton@codefresh.io

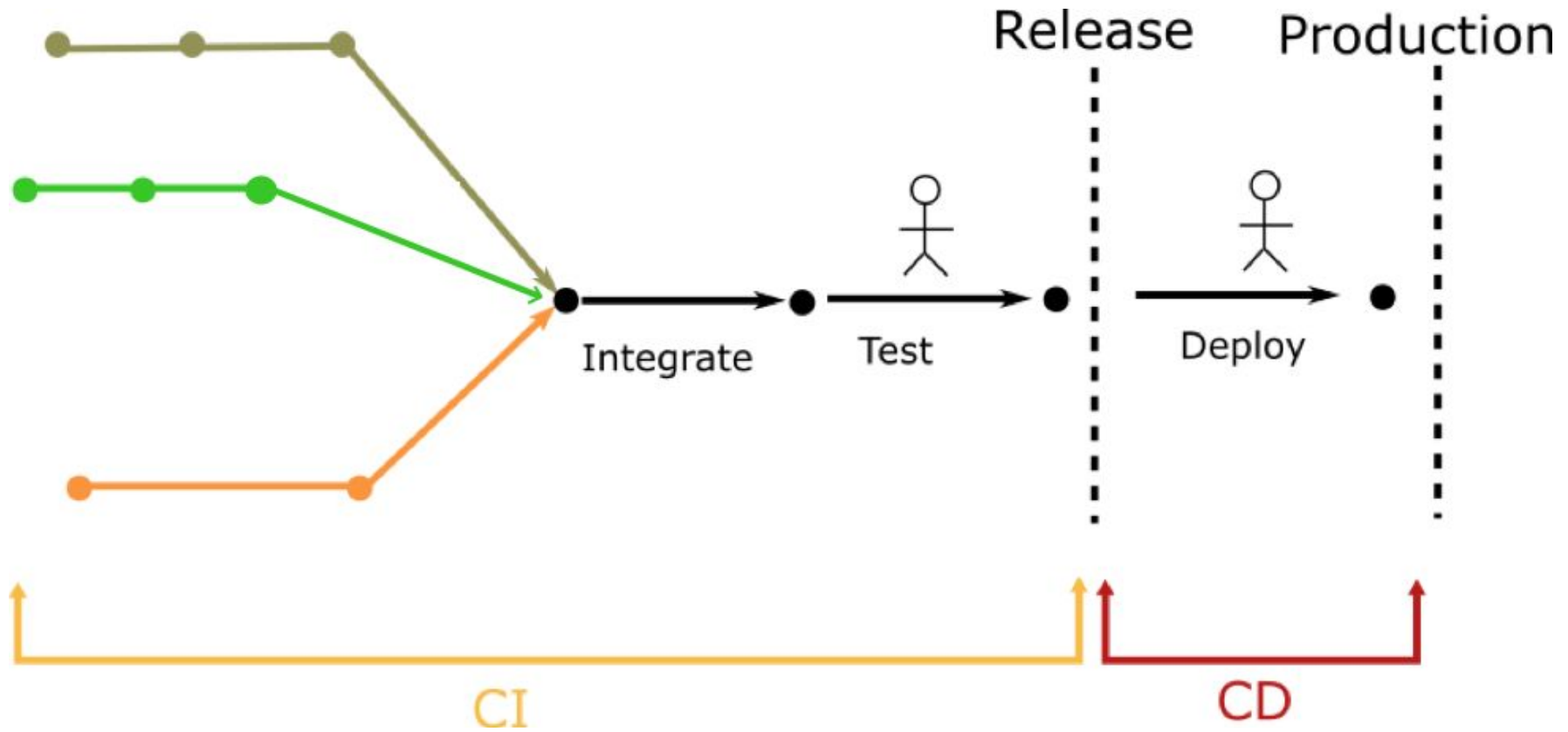


CI/CD Behind-the-Firewall



Continuous Integration/Delivery

The Basic Software Lifecycle



Codefresh

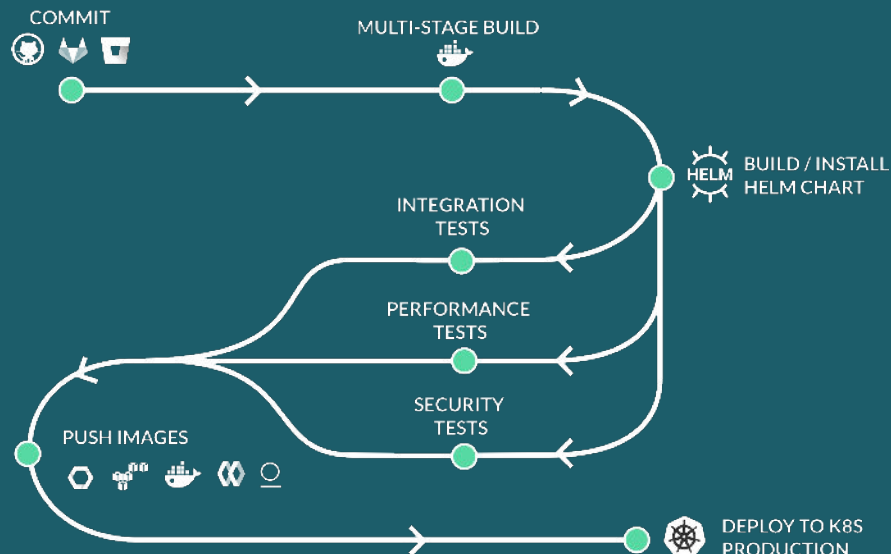
The 1st container-native
CI/CD Platform for
Microservices

 Container-native

 Intuitive & Robust

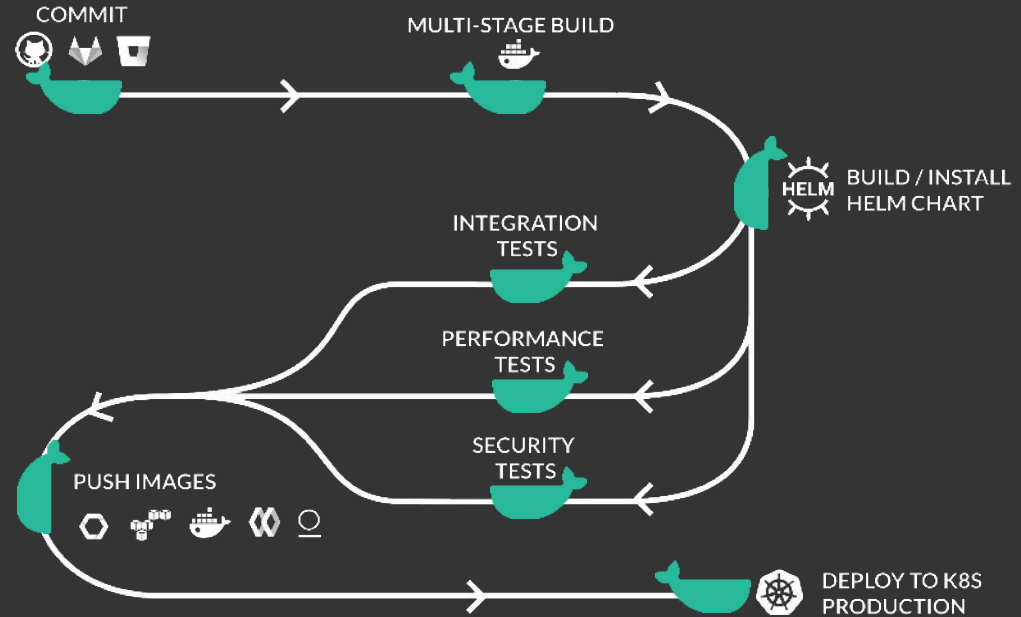
 Enterprise Ready

 Flexible Delivery



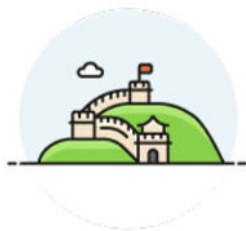
In Codefresh every step is a Docker image

- Natively runs and scales on Kubernetes
- Support for Kubernetes/Helm deployments
- Complete code to cloud traceability



Why Hybrid?

Hybrid Scenarios



Build with BTF Resources

Access code, secrets, artifacts, etc
that are behind the firewall.



Deploying BTF

Deploy to clusters in:
storefronts
private clouds
on prem data centers



Deploying to Poorly Connected Environments

Deploy to clusters that are only
intermittently connected

Customers that choose Hybrid CI/CD

Scale

Use Kubernetes native scaling

Secure

Access to internal services behind firewall

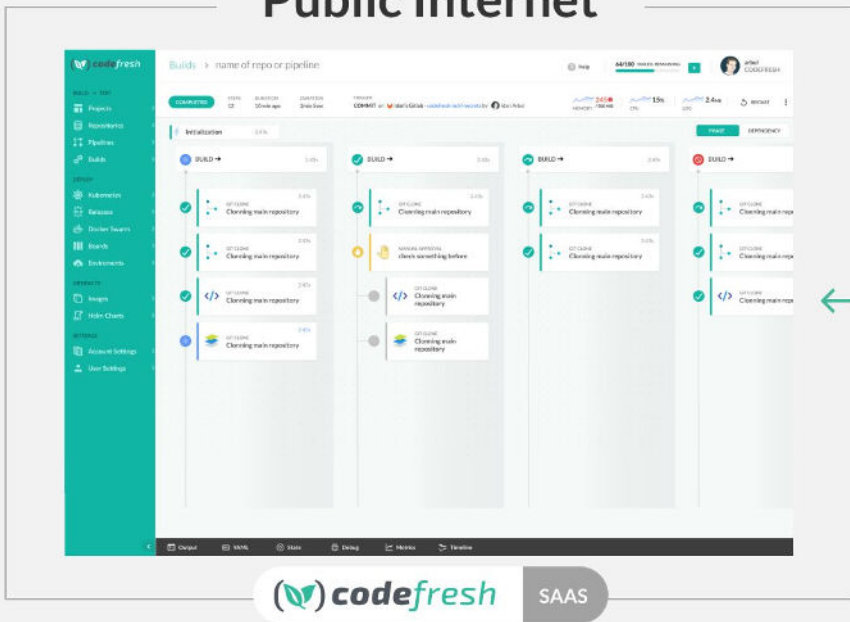
Manage

No need to to maintain the whole platform

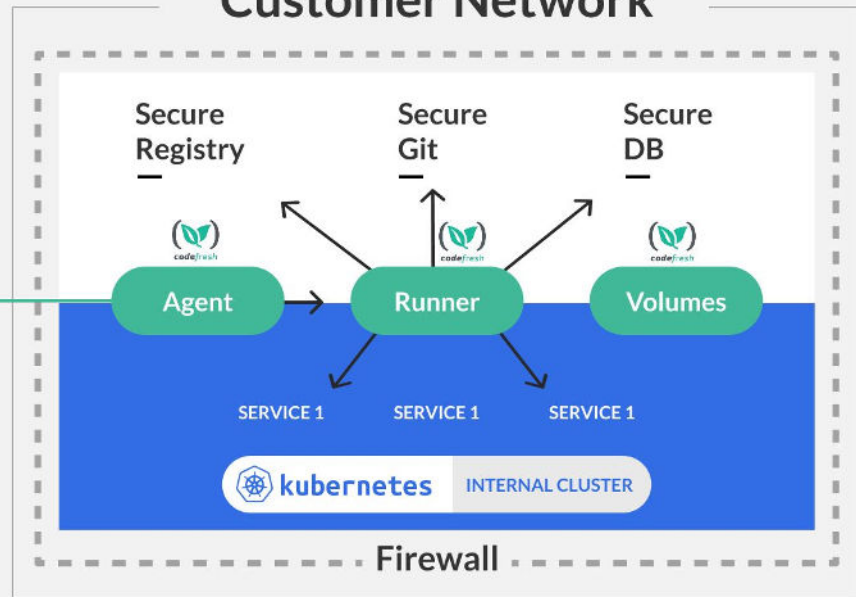
Codefresh Hybrid Runner

Codefresh Hybrid Runner

Public Internet

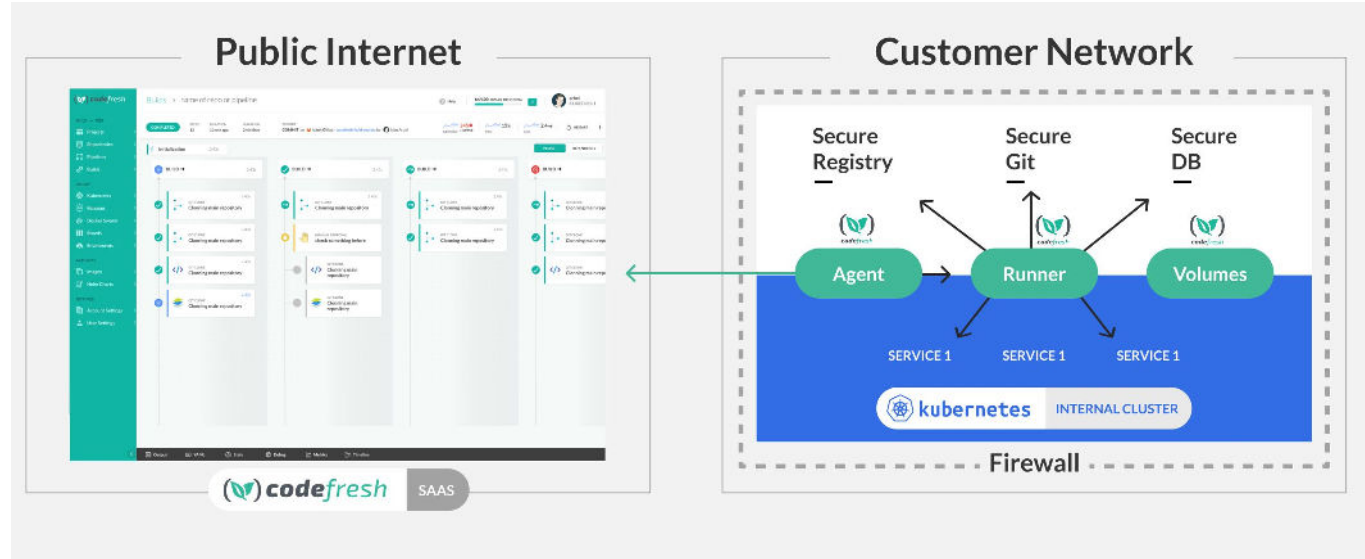


Customer Network




Codefresh Hybrid Runner characteristics

- Runs on Kubernetes
- Unidirectional communication
- Runner polls Codefresh
- No open ports needed



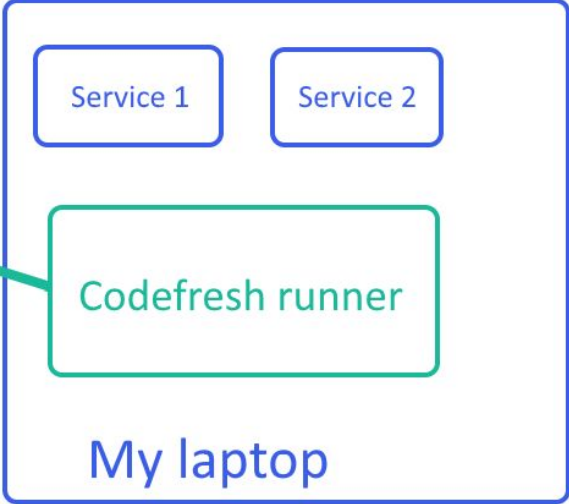
Demo 1:
Runtime = my laptop

Run pipelines on Docker for desktop



A screenshot of the Codefresh SAAS web interface. It shows a dashboard with a sidebar on the left containing navigation options like "Home", "Pipelines", "Jobs", "Accounts", "Settings", and "Help". The main content area displays a table of Kubernetes Services with columns for Name, Namespace, Version, and Status. Below the table, there are sections for "All Clusters" and "All Pipelines".

Codefresh SAAS



A diagram representing a local Kubernetes setup on a laptop. It is enclosed in a blue rounded rectangle. At the top, there are two smaller blue rounded rectangles labeled "Service 1" and "Service 2". Below these is a larger green rounded rectangle labeled "Codefresh runner". At the bottom of the main container is the text "My laptop". A green arrow points from the "Codefresh runner" box to the "Codefresh SAAS" screenshot on the left.

Service 1 Service 2

Codefresh runner

My laptop

Demo 2:

Build on EKS with Autoscaling

Summary

- SAAS, Hybrid, On prem
- Hybrid can be installed on any cluster
- Secure access, no open firewall ports
- Multiple runtime environments



Thank You!

**Build Fast,
Deploy Faster**

Signup for a FREE account with
UNLIMITED builds

& schedule a 1:1 with
our experts at

<https://codefresh.io>

guy.salton@codefresh.io

